



Category One Water Analysis

Hereby Certifies to:

ABC Title Company

That WTGs Category One Water analysis is an opinion regarding the encroachment or proximity of a subject property to waters designated as Category One by either the NJDEP or the Federal Government. In addition, this report will approximate areas located 150ft and 300ft from the designated Category One Water source. This information is provided as reference without warranty of any kind. The digital data used has limitations of accuracy. This map was created using layers from the NJDEP, based on photography captured in the spring of 2007. This product has not been verified by NJDEP and is not state-authorized. This map is not intended to substitute for on the ground jurisdictional boundaries. The Category One water digital layer is intended to serve as a resource for analysis, rather than regulatory delineations.

SUBJECT PROPERTY

County: Monmouth

Municipality: Marlboro

Block: 213

Lot: 37

Qualifier:

Add Lots:

Location: 3 Maywood Drive, Marlboro NJ 07746

As shown on Tax Map #: 140

SEARCH RESULTS

Approximate Total Area: 0.4 Acres

Approximate Area of property within 300ft of a Category One water: 0.4 Acres

Estimated Percentage of property within 300ft of a Category One water: 100%

Approximate Area of property within 150ft of Category One water: 0.1 Acres

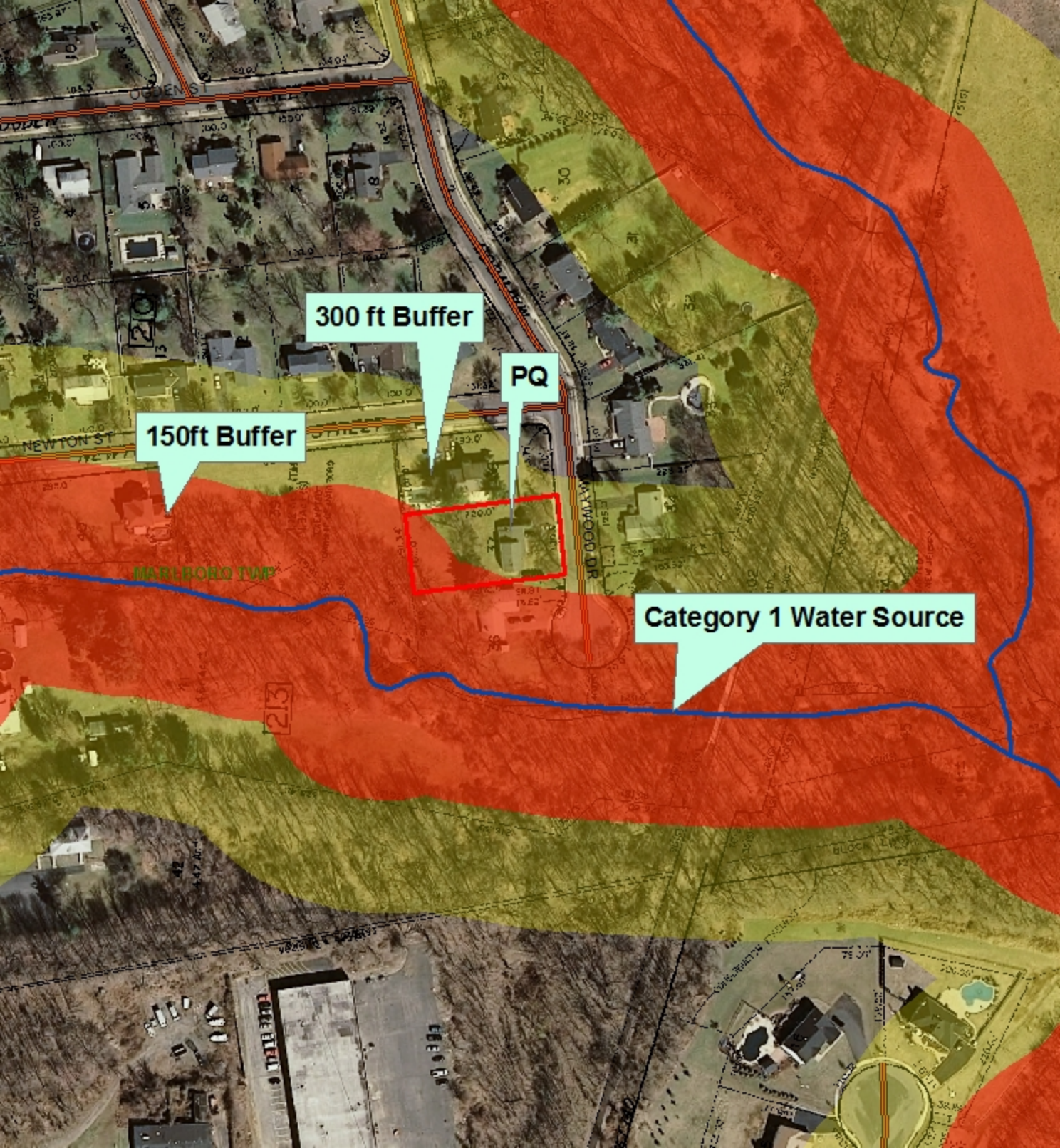
Estimated Percentage of property within 150ft of Category One water: 28%

Date: 8/24/2011

Fee: \$40

WESTERN TECHNOLOGIES GROUP, LLC.
HAS CAUSED THIS CERTIFICATE TO BE EXECUTED BY ITS PRESIDENT

GERALD JONES



300 ft Buffer

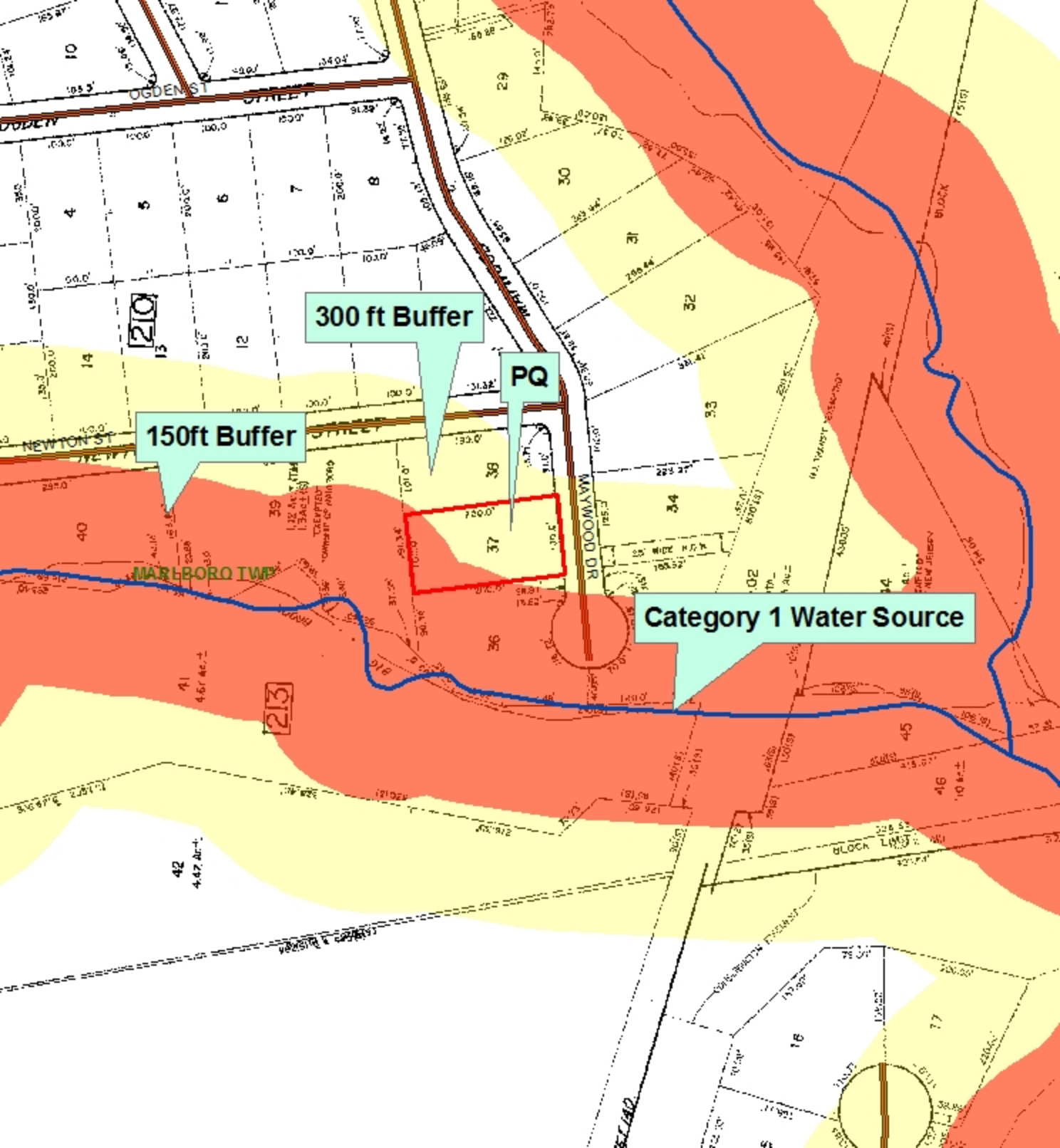
PQ

150ft Buffer

MARLBORO TWP

213

Category 1 Water Source



300 ft Buffer

PQ

150ft Buffer

Category 1 Water Source

MARLBORO TWP

210

213

42

4.47 Ac.±

41

4.61 Ac.±

40

1.12 Ac.±

1.31 Ac.±

1.31 Ac.±

1.31 Ac.±

1.31 Ac.±

1.31 Ac.±

1.31 Ac.±

1.31 Ac.±

1.31 Ac.±

1.31 Ac.±

1.31 Ac.±

1.31 Ac.±

1.31 Ac.±

1.31 Ac.±

1.31 Ac.±

1.31 Ac.±

1.31 Ac.±

1.31 Ac.±

1.31 Ac.±

1.31 Ac.±

1.31 Ac.±

1.31 Ac.±

1.31 Ac.±